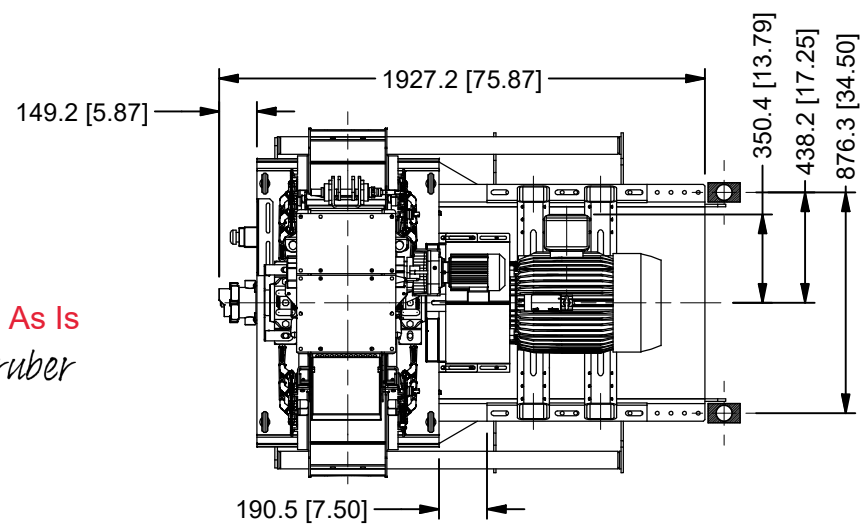
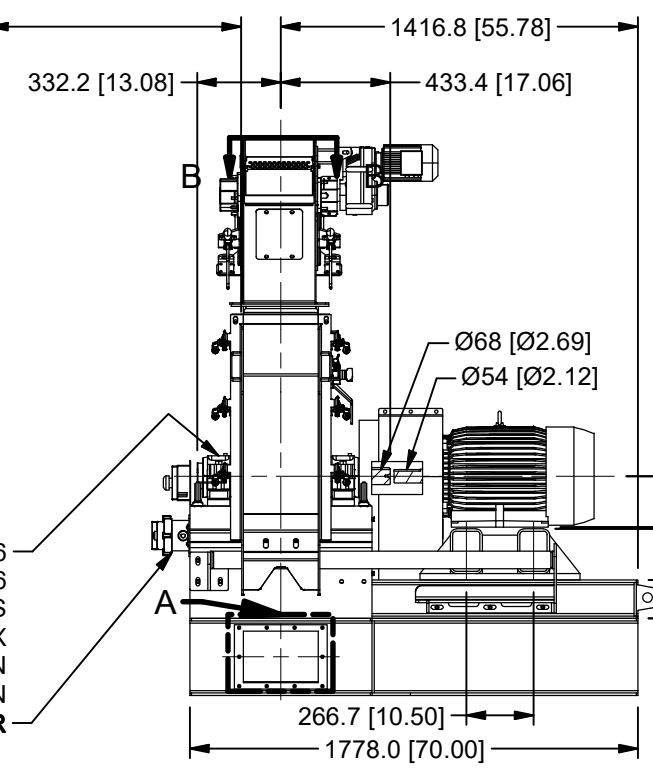
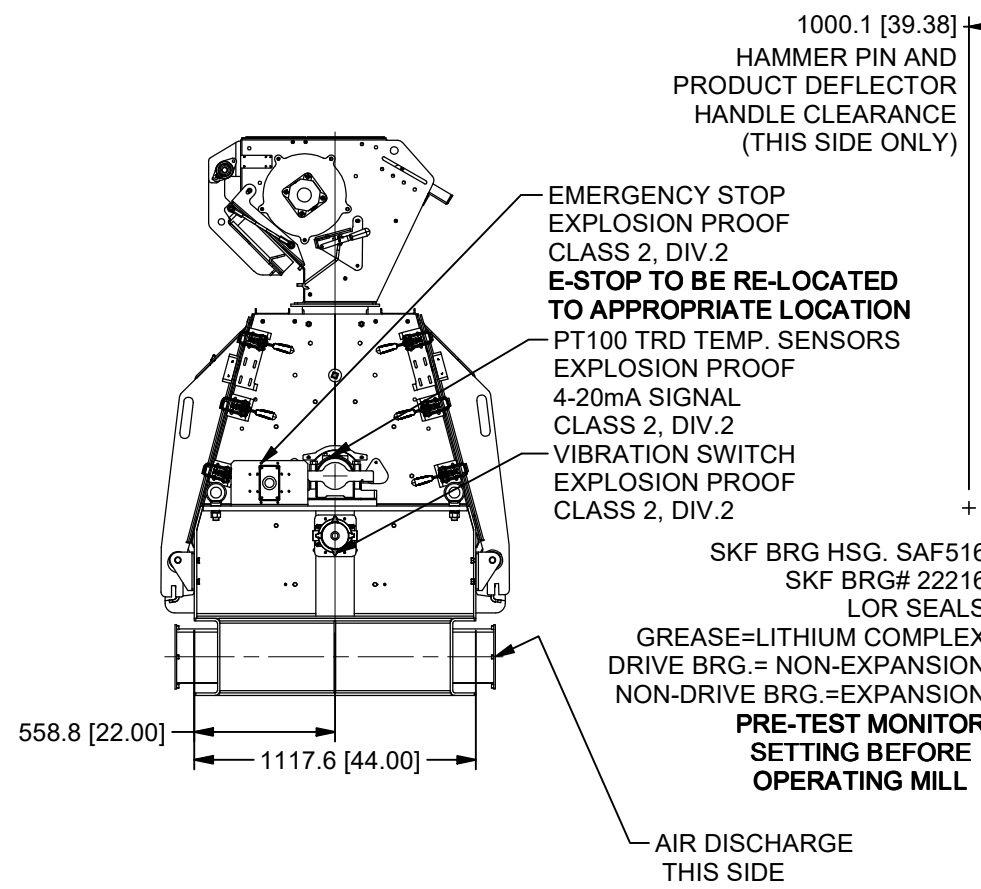
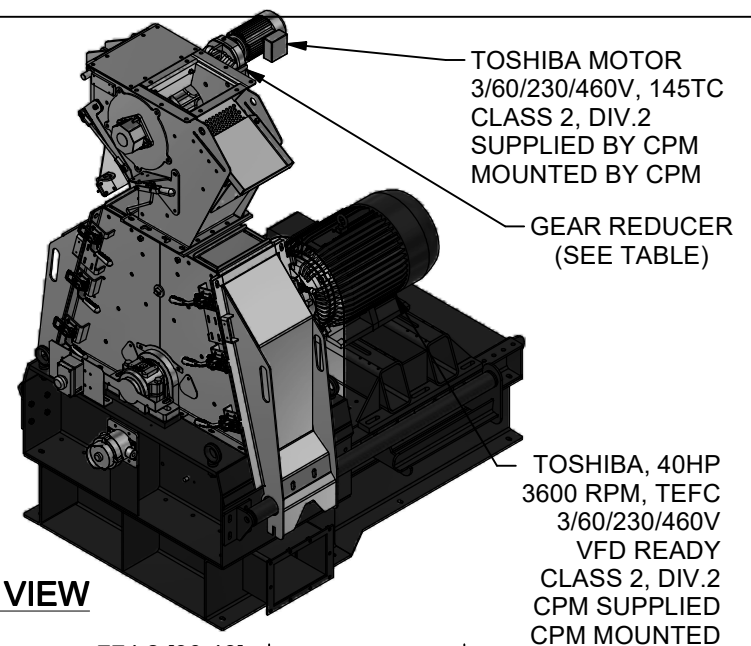


**DETAIL B**  
FEEDER INLET FLANGE

Approved As Is  
Jacob Gruber

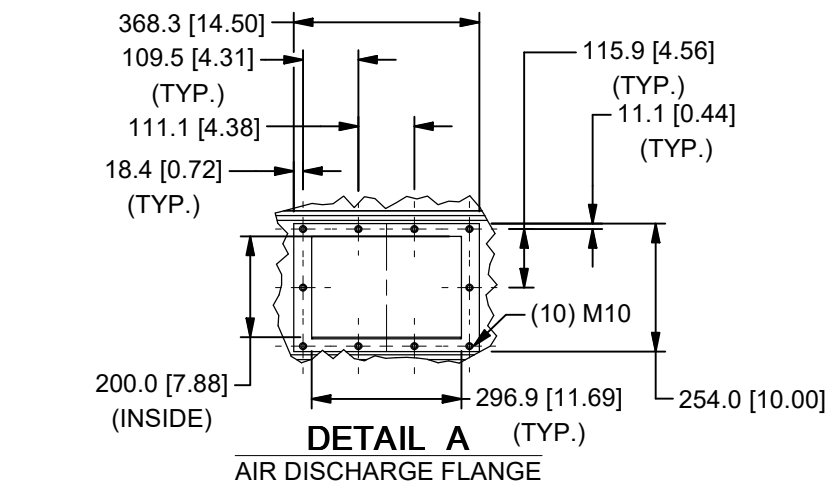
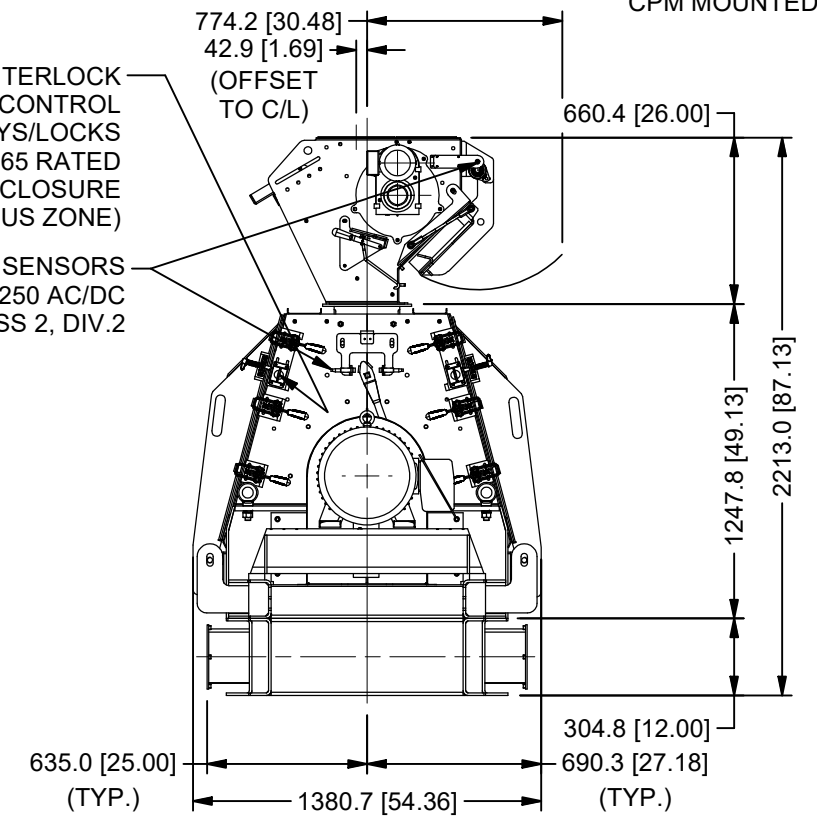


**ASSEMBLY VIEW**

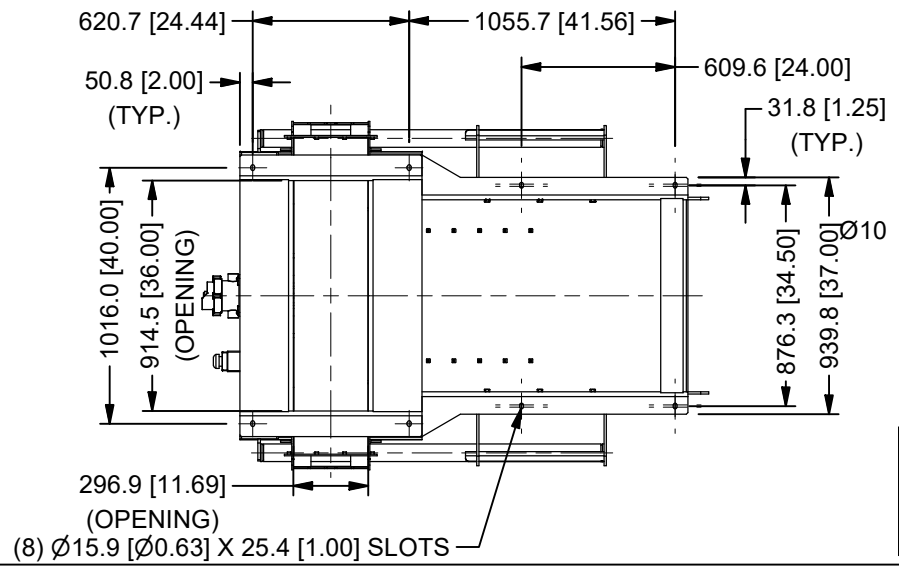


BEMF SAFETY INTERLOCK  
24VDC CONTROL  
(2) KEYS/LOCKS  
IP65 RATED  
(MOUNT ENCLOSURE  
OUTSIDE HAZARDOUS ZONE)

(3) PROX. SENSORS  
20-250 AC/DC  
CLASS 2, DIV.2



**DETAIL A**  
AIR DISCHARGE FLANGE



- NOTES:  
1) ALL DIMENSIONS IN BRACKETS=DECIMAL  
2) APROX. WEIGHT OF HAMMERMILL, ASF & SCREW FEEDER, NOT INCLUDING MOTOR=4,050 LBS. [1,840 KG]  
3) DYNAMIC SHAFT TORQUE IS 350.2 FT. LBS.  
4) MAIN MOTOR CONDUIT SHOULD BE RUN FROM ABOVE OR FROM LOCATIONS SHOWN. ALL ELECTRICAL CONDUIT MUST NOT INTERFERE WITH THE OPERATION OF THE DOORS.  
5) MOTOR CONDUIT BOX MUST NOT EXCEED 711 [28.00"] FROM CENTER LINE.  
6) FLOOR SUPPORT STRUCTURE TO HAVE A NATURAL FREQUENCY GREATER THAN 8.  
7) MAIN MOTOR MUST BE BI-DIRECTIONAL.  
8) CONTROL VOLTAGE TO BE 24VDC.  
9) MACHINE TO BE PAINTED RAL1013, GUARDS RAL 7021.  
10) ELEMENT/COUPLING PROVIDED BY CHAMPION IS E50 OMEGA WITH QD 'E' HUBS.  
11) THE PROX. SENSOR REQUIRES SHIELDED CABLE.  
12) IF MAIN MOTOR WILL BE OPERATED WITH A VFD, CPM ENGINEERING MUST BE MADE AWARE OF THIS BEFORE APPROVAL DRAWING CAN BE SIGNED OFF.  
13) SEE SEPARATE HAMMERMILL MOUNTING REFERENCE DRAWING B35621 AND B35809.  
14) THE INTERLOCK ENCLOSURE MUST BE MOUNTED OUTSIDE OF THE HAZARDOUS ZONE.  
15) ALL VISIBLE SHAFTS TO BE GUARDED.  
16) THE EMERGENCY STOP TO BE RELOCATED AWAY FROM EQUIPMENT.  
17) CPM00032 TO HAVE INTERNAL FINE GRIND COMPONENTS, CPM00033 WILL NOT. BOTH MACHINES TO HAVE ALL FINE ROTORS. BOTH ROTARY FEEDERS TO HAVE FABRICATED ROTORS.

HRF SERIAL#	* POCKET DIA.*	REDUCER	* RATIO	* CAPACITY	* DENSITY
CPM00032-40	Ø10	FT67	95.94:1	1,850 PPH	50 PPCF
CPM00033-40	Ø12	FT67	95.94:1	1,850 PPH	7.5-9.5 PPCF

NOTICE: THE EXPORT OR RE-EXPORT OF THIS DRAWING OR A PRODUCT PRODUCED BY THIS DRAWING IS SUBJECT TO U.S. EXPORT ADMINISTRATIVE REGULATIONS AND OTHER APPLICABLE GOVERNMENTAL RESTRICTIONS OR REGULATIONS. COPYRIGHT © 2016 CPM ACQUISITION CORP. ALL RIGHTS RESERVED

**CPM**

Title: **11.5X28 CHAMPION HAMMERMILL  
MANUAL ACT'D DEFLECTOR &  
FINE GRIND COMPONENTS  
W/11.5 HRF ROTARY FEEDER**

**CERTIFIED DRAWING**  
Drawing Number: **10540530**

REV. **0**

REVISIONS	DATE	DATE
TRW	12/6/2022	12/7/2022
TRW		

**PROPRIETARY NOTICE**  
THIS DOCUMENT CONTAINS CONFIDENTIAL AND TRADE SECRET INFORMATION, AND IS THE PROPERTY OF CPM ACQUISITION CORP. AND IS GIVEN TO THE RECEIVER IN CONFIDENCE. THE RECEIVER BY RECEIPT AND RETENTION OF THE DOCUMENT ACCEPTS THE DOCUMENT IN CONFIDENCE AND AGREES THAT, EXCEPT AS AUTHORIZED IN WRITING BY CPM ACQUISITION CORP. IT WILL (1) NOT USE THE DOCUMENT OR ANY COPY THEREOF OR THE CONFIDENTIAL OR TRADE SECRET INFORMATION THEREIN, (2) NOT COPY THE DOCUMENT, (3) NOT DISCLOSE TO OTHERS EITHER THE DOCUMENT OR THE CONFIDENTIAL OR TRADE SECRET INFORMATION THEREIN, AND (4) UPON COMPLETION OF THE NEED TO RETAIN THE DOCUMENT, OR UPON DEMAND, RETURN THE DOCUMENT, ALL COPIES THEREOF, AND ALL MATERIAL COPIED THEREFROM.

THIS DIMENSION SHEET IS FOR REFERENCE ONLY UNLESS PROPERLY ENDORSED.

CERTIFIED FOR: **WENGER**  
**MATHILE, GUATEMALA**

SERIAL NUMBER: **0032/32-40 & 0033/33-40**

CUSTOMER NUMBER: \_\_\_\_\_

CPM NUMBER: \_\_\_\_\_

CERTIFIED BY: **TRW**

DATE: **12/7/2022**

Drawing Number: **10540530**