

**MODEL VF2-24-10-9' LONG - VIBRATORY CONVEYOR**

PAN SIZE: 24" WIDE x 10" DEEP x 9' LONG  
 FEED RATE: 35 FT/MIN ~ PRODUCT @ 0.58" PRODUCT DEPTH = 206 FT<sup>3</sup>/HR (CORN COLLETES)  
 RATED CAPACITY: 206 FT<sup>3</sup>/HR @ 7.5 LBS/FT<sup>3</sup> = 1,545 LBS/HR  
 STROKE: 3/8" OPERATING AMPLITUDE @ 900 CPM

CONSTRUCTION: 304 SS FORMED PAN  
 STAINLESS STEEL PLATE BASE FRAME  
 STAINLESS STEEL "H-STYLE" SUPPORTS

SCREENS: OVERS - Ø 7/8" HOLES ON 1 1/8" CENTERS, 7' TOTAL LENGTH  
 FINES - Ø 1/8" HOLES ON 3/16" CENTERS, 7' TOTAL LENGTH

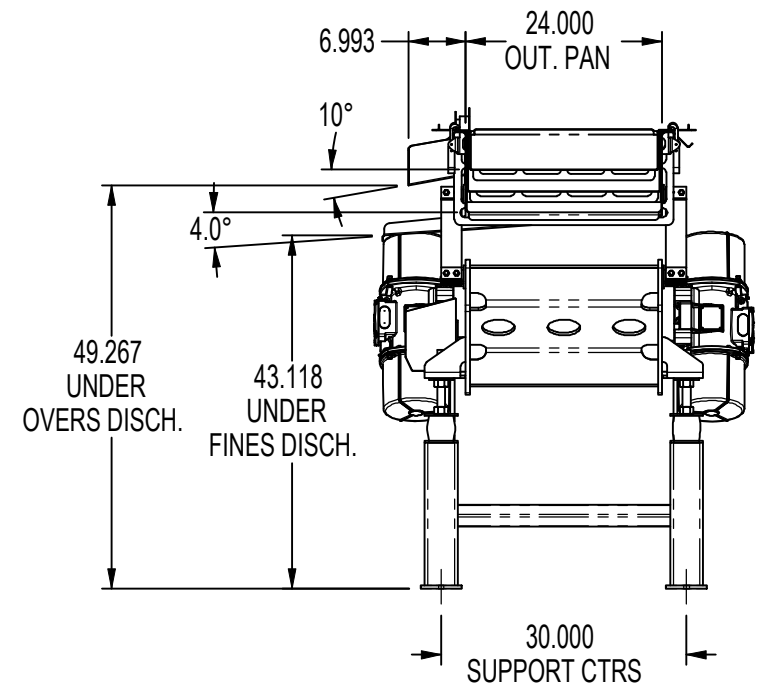
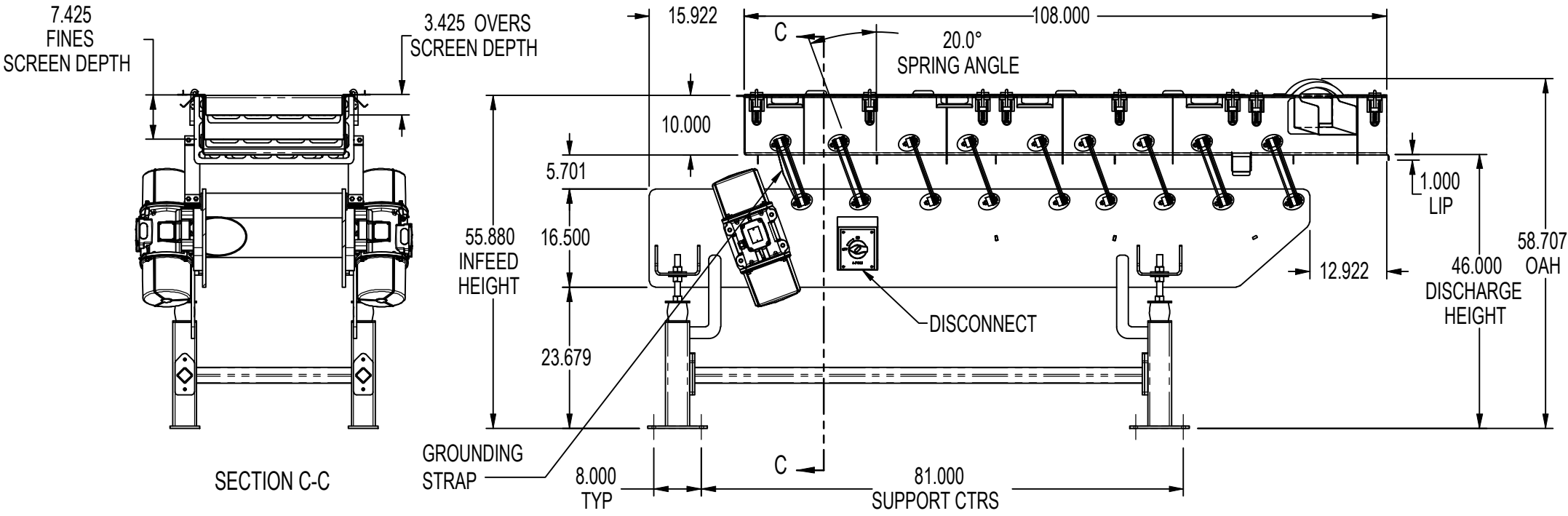
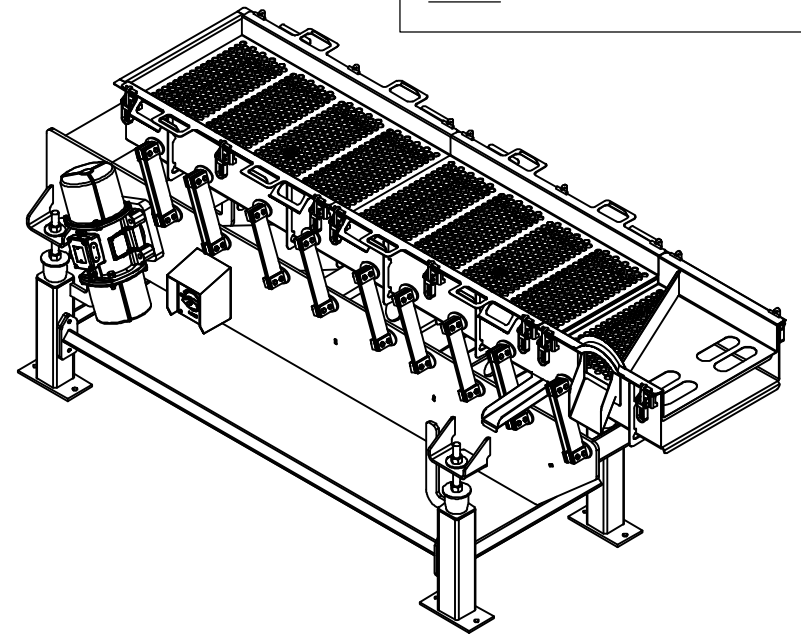
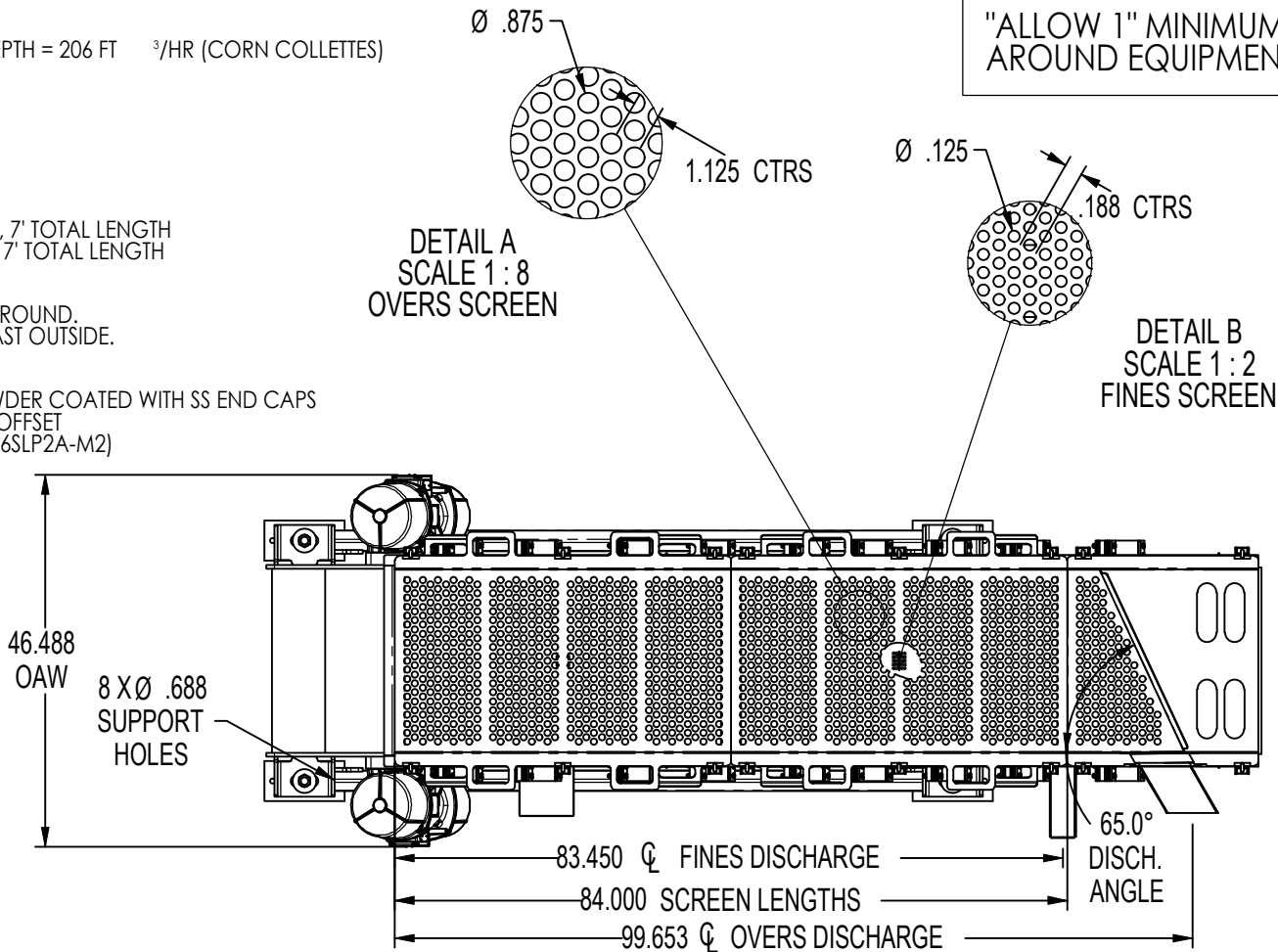
WELD & FINISH: CONTINUOUS WELDS IN PRODUCT ZONE, GROUND.  
 2B DA FINISH INSIDE PANS, GLASS BEAD BLAST OUTSIDE.

ELECTRICAL: 460V/60HZ/3 PHASE, (2.25A TOTAL)  
 DRIVE: DUAL VIBRA-MOTORS, MVSI 9-2030 POWDER COATED WITH SS END CAPS  
 (0.4HP EACH) MOTOR WEIGHTS SET @ 60% OFFSET

CONTROLS: MENEKES, 6 POLE, 30A DISCONNECT (ME306SLP2A-M2)

"ALLOW 1" MINIMUM CLEARANCE  
 AROUND EQUIPMENT"

**DRAWING APPROVAL**  
 APPROVAL OF THESE DRAWINGS INDICATES THAT PFI CAN BEGIN PRODUCTION OF THE PARTS AND EQUIPMENT THAT WAS APPROVED. ANY CHANGES TO THE DESIGN REQUIREMENTS AFTER APPROVAL WILL REQUIRE A CHANGE ORDER TO ACCOUNT FOR ADDITIONAL TIME AND MONEY NEEDED TO IMPLEMENT CHANGES.  
 RELEASED - NO CHANGES  
 REVISE AND RESUBMIT  
 NAME: Steve C. - Wenger  
 DATE: 1/23/2023



SOLIDWORKS FILE: C:\Vaults\FI Vault\ROJECTS\VF2\VF2-1542\SOLIDWORKS\VF2-1542-00-0000

NONSTOCKED; CONTROLLED; MANUFACTURED

REVISIONS			
REV.	DESCRIPTION	DATE	BY
A	INITIAL DWG	01/09/23	FO

GENERAL EQUIPMENT NOTES  
 PFI VIBRA-FLEX CONVEYOR  
 QUOTE PFIQ 10707  
 CUSTOMER ID: 040653

STANDARD TOLERANCES  
 MACHINE SHOP  
 FRACTION DIM +/- 1/64"  
 DECIMAL DIM .00 +/- .010"  
 DECIMAL DIM .000 +/- .005"  
 FABRICATION  
 FRACTION DIM +/- 1/8"  
 DECIMAL DIM .00 +/- .125"  
 ANGLES +/- 1/2°

PFICONVEYORS.COM  
 THIS DRAWING IS INTENDED TO ASSIST A POTENTIAL BUYER IN EVALUATING PFI PRODUCTS ONLY. ANY OTHER USE, COPY, OR REPRODUCTION OF THIS DRAWING WITHOUT PRIOR WRITTEN CONSENT FROM PFI IS FORBIDDEN

CUSTOMER  
 WENGER  
 MANUFACTURING INC  
 LOCATION  
 SABETHA, KS  
 PROJECT DESCRIPTION  
 RFQ 119345 CANADA

VF2-24-10-9' LG SCREENING CONVEYOR					
SHOP ORDER NUMBER C01027201-000		ITEM NUMBER VF2-1542-00-0000		QTY 1	
MATERIAL ITEM NUMBER			OPERATION 139	WEIGHT 2167.84	
SCALE 1:24	DRAWN DATE 01/17/23	SHEET 1 OF 1	DESIGNER FO	DESIGN LOC. SATX	REVISION A